

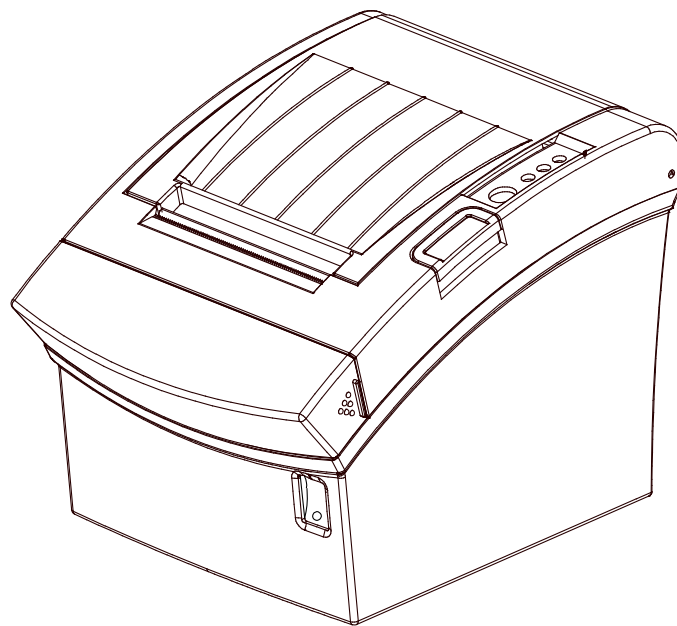
**BIXOLON®**

# Software Manual NV Image Tool

---

Rev. 1.03

SRP-350II



<http://www.bixolon.com>

## ■ Table of Contents

<b>1. Manual Information</b> .....	<b>3</b>
<b>2. Usage Environment</b> .....	<b>3</b>
2-1 Operating System .....	3
2-2 Device Property .....	3
<b>3. Usage of NV Image Tool</b> .....	<b>4</b>
3-1 The beginning of NV Image Tool.....	4
3-2 Communication Setting.....	5
3-3 Image List Management .....	6
3-4 Change the Color.....	7
3-5 Download the image .....	7
3-5-1 Download the image in NV bit Image mode .....	8
3-5-2 Download the image in NV graphics mode.....	8
3-6 Print the image.....	9
3-6-1 Print the image in NV bit Image mode .....	10
3-6-2 Print the image in NV graphics mode .....	10

## 1. Manual Information

The purpose of this manual is to provide information on the operation and usage instructions of the NV Image Tool for the BIXOLON Printers. This program helps you to download user-defined images to the flash memory in the printer and to recall and print those images with fast speed.

We at BIXOLON maintain ongoing efforts to enhance and upgrade the functions and quality of all our products. In following, product specifications and/or user manual content may be changed without prior notice.

## 2. Usage Environment

### 2-1 Operating System

Following operating systems are supported for usage.

Microsoft Windows XP (32bit/64bit)  
Microsoft Windows Server 2003 (32bit/64bit)  
Microsoft Windows Embedded For Point Of Service  
Microsoft Windows VISTA (32bit/64bit)  
Microsoft Windows Server 2008 (32bit/64bit)  
Microsoft Windows 7 (32bit/64bit)  
Microsoft Windows 8 (32bit/64bit)

### 2-2 Device Property

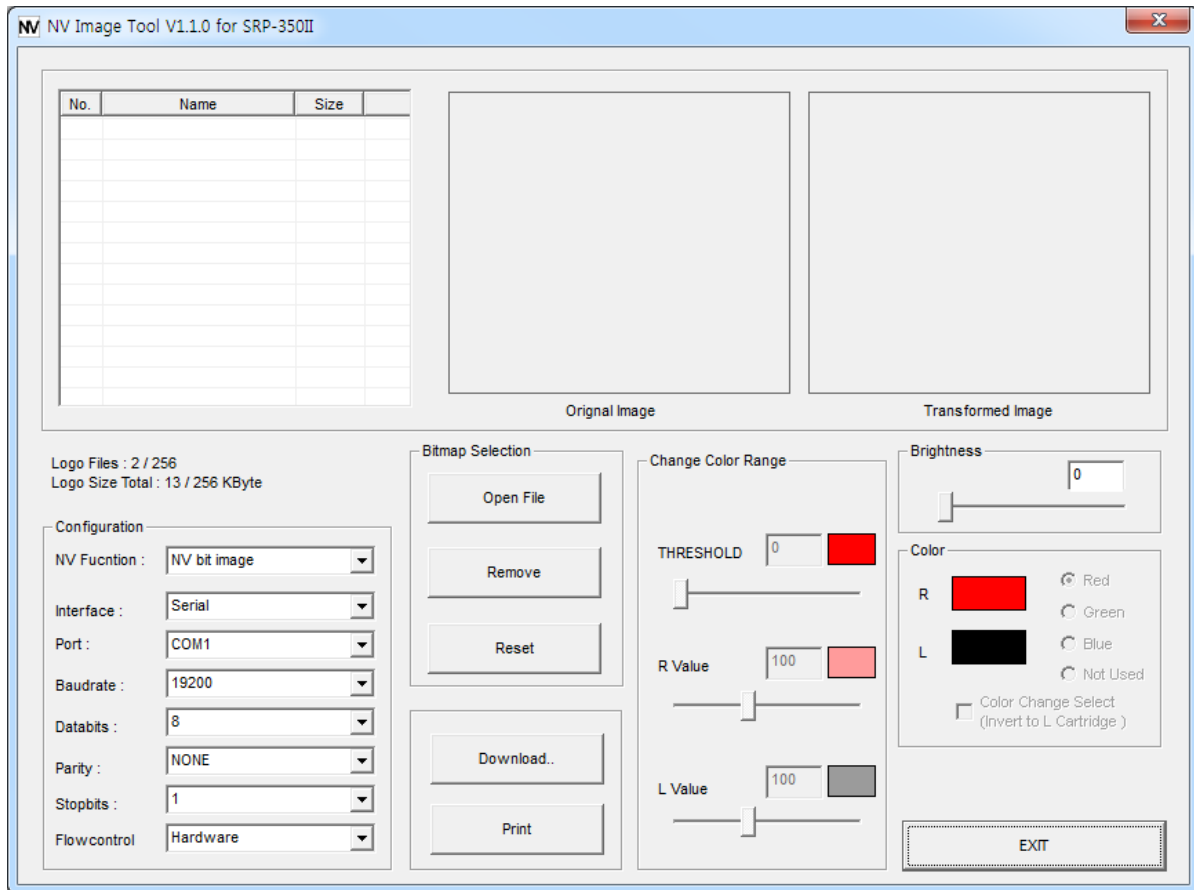
Model	Serial	Parallel	USB	Ethernet	Download Image Count
SRP-350II	O	O	O	O	255

O: Supported  
X: Unsupported

## 3. Usage of NV Image Tool

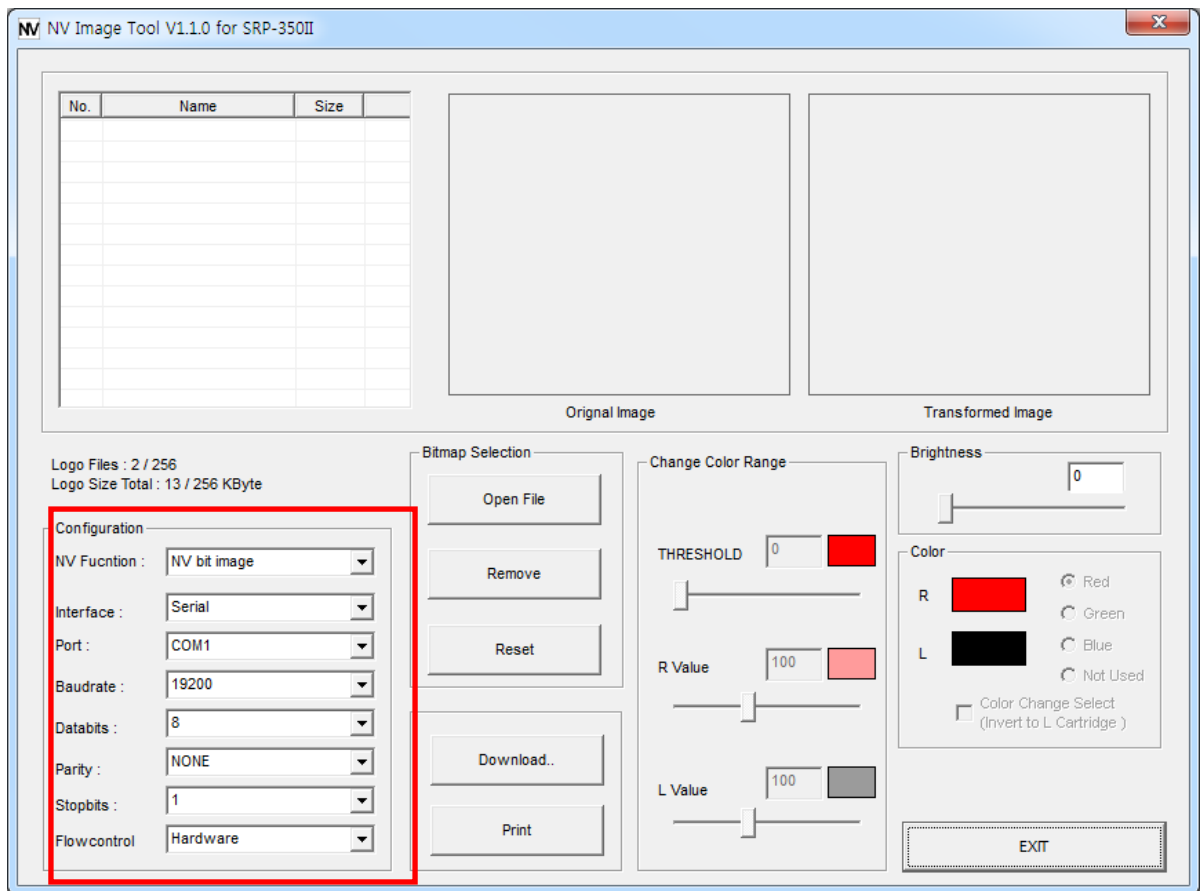
### 3-1 The beginning of NV Image Tool

- 1) Run the “NV Image Tool” program.
- 2) Upon initiation of the program, the following main window will be appeared.



## 3-2 Communication Setting

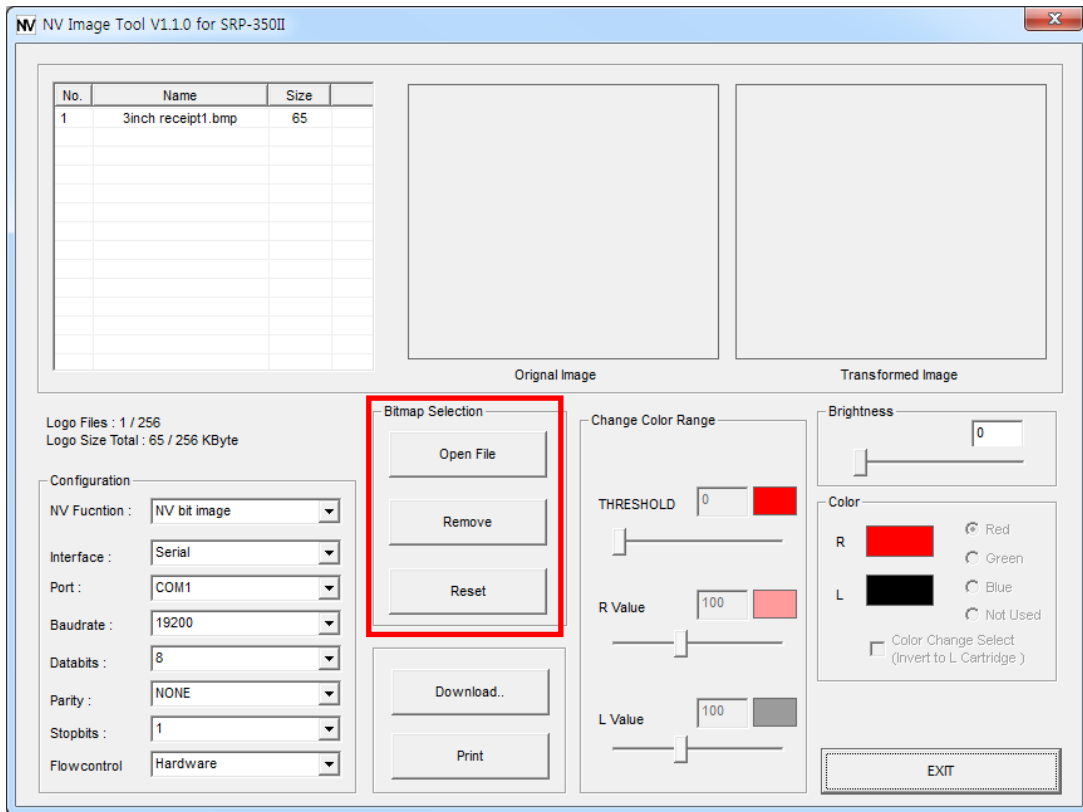
- 1) Select the interface installed in the printer and set the communication environment for the corresponding interface.



\* In the Serial Interface, match the communication setting (COM port number and Baudrate) to those of the printer.

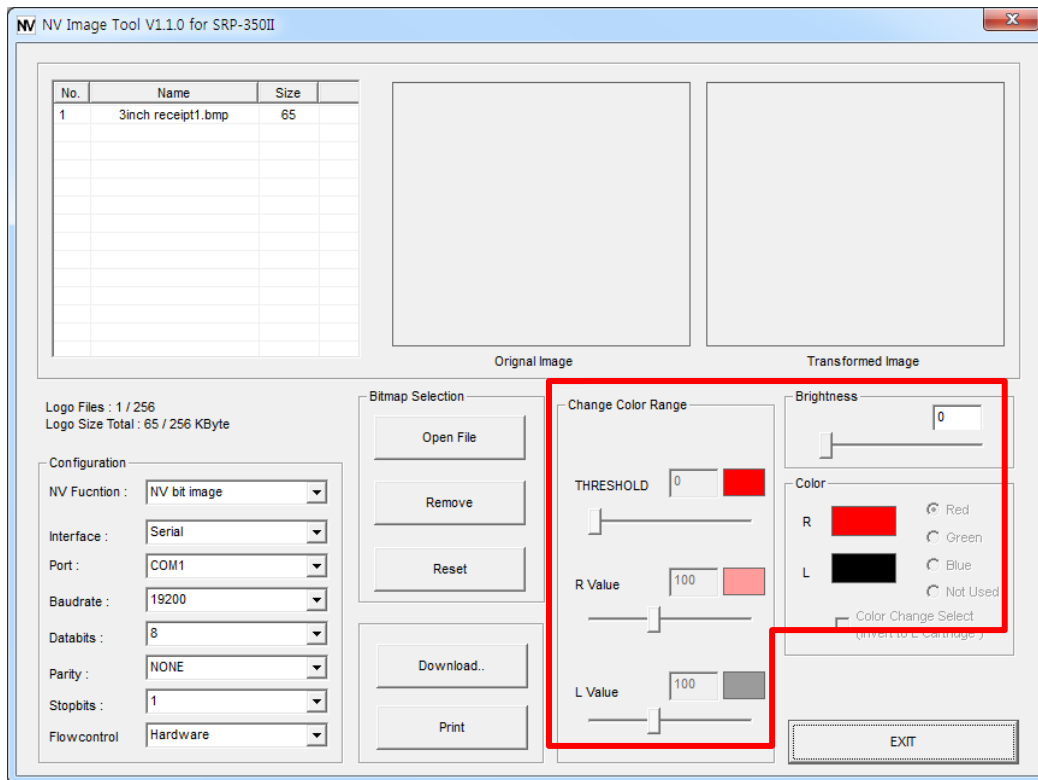
## 3-3 Image List Management

The images can be opened / added, deleted in the Image list box using three buttons in Bitmap selection. Only **bmp** type of image is available to download.



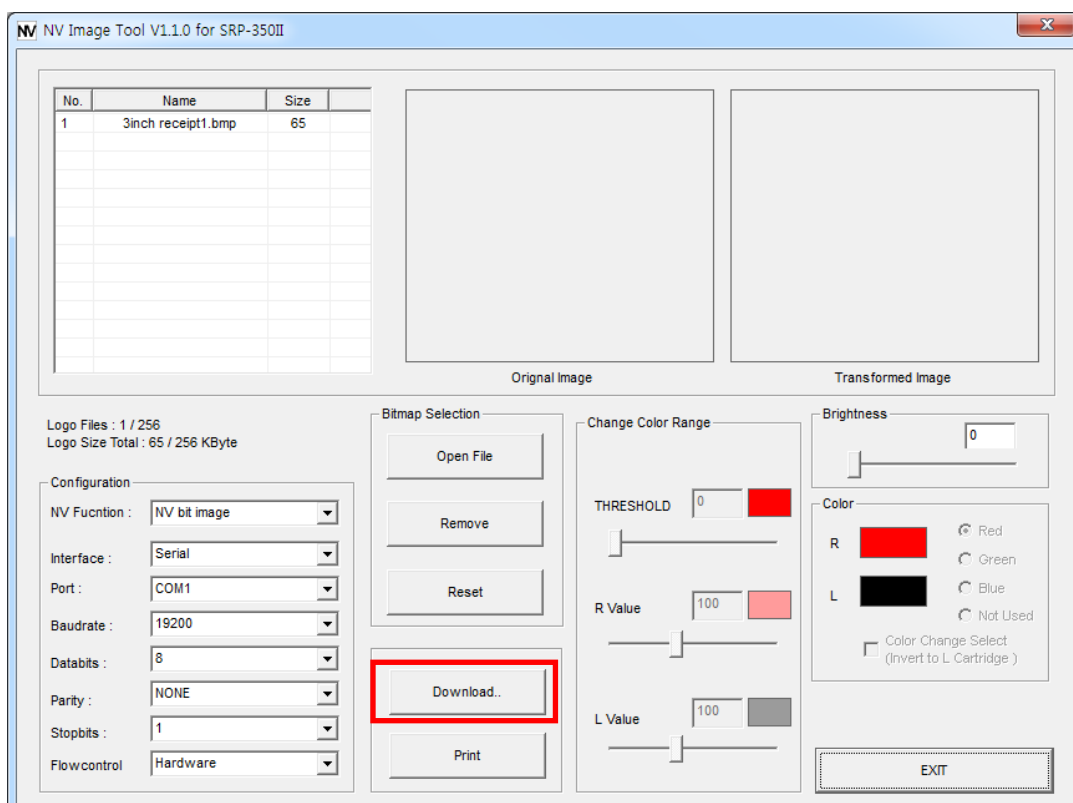
## 3-4 Change the Color

Color level of the image can be adjusted using the color conversion menu.



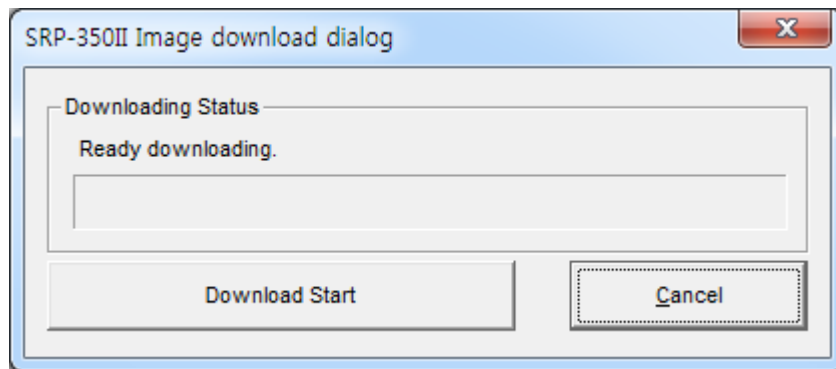
## 3-5 Download the image

Press the "Download" button and the Download screen will be displayed.



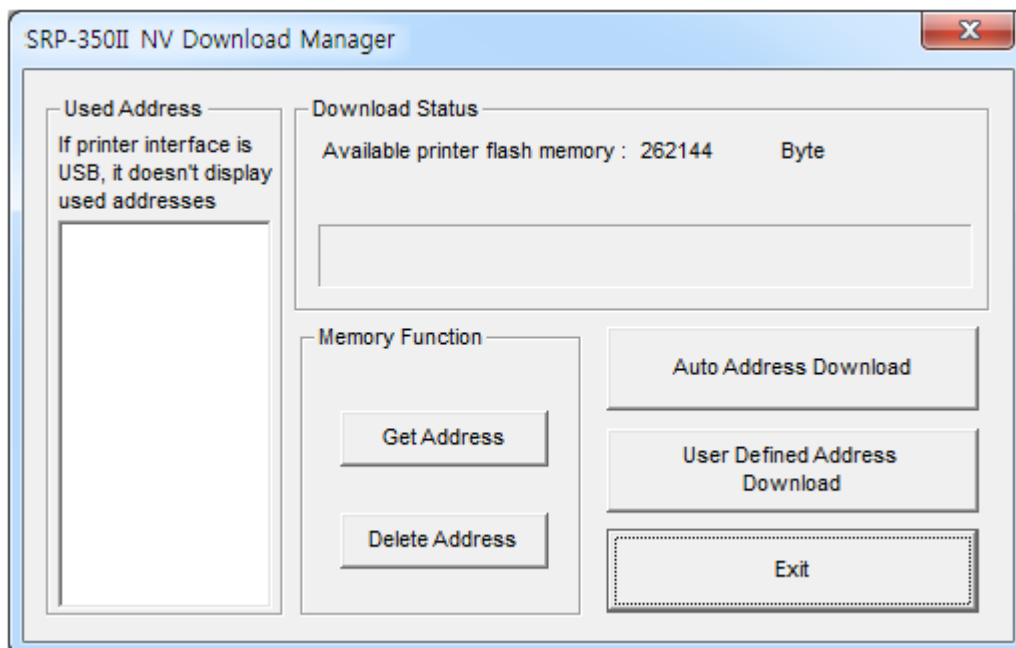
## 3-5-1 Download the image in NV bit Image mode

After all images stored on the corresponding printer are deleted, the image is downloaded. The image is assigned a number according to the image list displayed on the screen.



## 3-5-2 Download the image in NV graphics mode

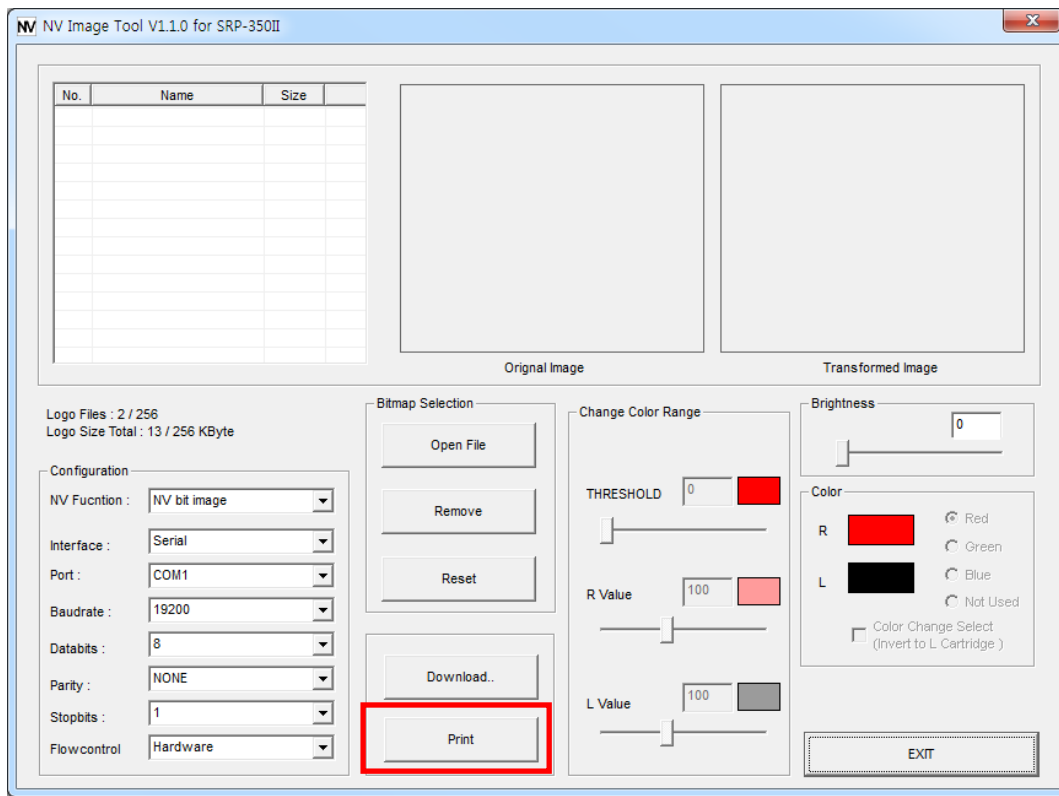
A special image address can be defined for downloading. Press the "Auto Address Download" button of separate address definition is not required. After downloading, the "Get Address" button can be used to recall the address value for the image stored on the current printer.





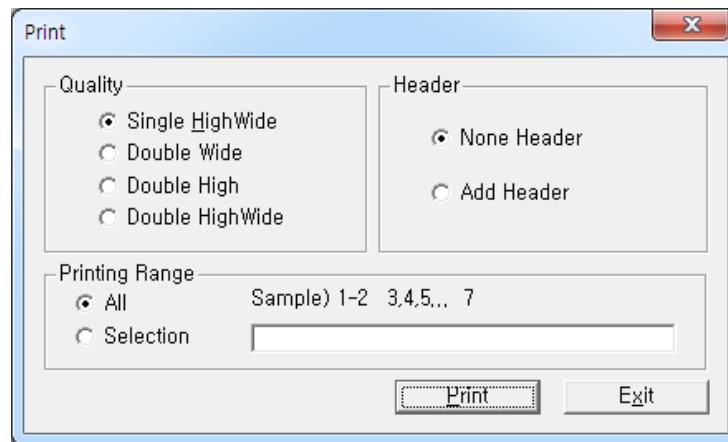
## 3-6 Print the image

Images saved in the printer can be selected and printed using the Print button on the main screen..



## 3-6-1 Print the image in NV bit Image mode

Configuration of expansion options and the selection of the number of the image to be printed can be done when printing.



## 3-6-2 Print the image in NV graphics mode

After selecting the address of the image to print following the recall of the addresses of all currently stored images, press the "Print" button to print.

